



Details+

HO & N scale crossing signals



Details Plus crossing signals are accurately sized and proportional. Lighted models have realistic brightness levels and lamp diffusion. Non-lighted models have even more detail, and feature more delicate lamp struts.

When deciding where to locate your signal, a helpful document is from the U.S.

Department of Transportation which gives specifications for signal dimensions and location relative to the road and track. This helpful PDF document can be downloaded from our website (www.detailsplusshop.com) under the "Download" tab.

Models with crossing gates can be operated manually (fingers!) or automatically with mechanisms under the benchwork (not included). There is a dimple on the gate counterweight that can be drilled with a pin vise for attaching the actuation rod.

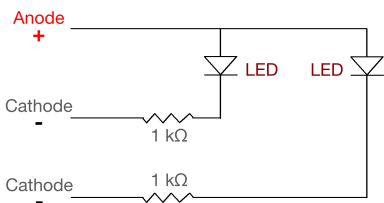
Installation

Drill a hole where the signal is to be located. Don't glue the signal onto your layout until you have made the electrical connections and confirmed proper operation.

Electrical and Wiring

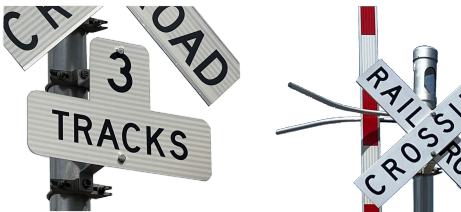
The two red (positive) wires should be kept together as the "common" wire. The black wires with resistors are the negative leads. If you plan to use the signals without the resistors make sure the voltage never exceeds 2 Volts.

Signal Wiring Schematic



Details Plus signals work with common flasher circuits from NJ International, Walthers, Signalogic Systems, and Circuitron, or any controller that has a 6-12VDC output voltage. Follow the flasher manufacturer's instructions for proper connection.

Extra Parts



Included with your crossing signals are extra parts to add realism and customize your installation. (The exact contents depends on the model and scale.)

Track number signs are found on most modern crossing signals when the road is crossing more than one track. We include these signs and a decal set for 2, 3 and 4 tracks.

HO scale signals with gates also include the wind keeper "wishbone" that should be installed at the top of the pole. It is made of a flexible material to make it more durable.

See our complete product line at
www.detailsplusshop.com

Details Plus

P.O. Box 368 New Albany, Ohio 43054 U.S.A.
info@detailsplusshop.com